



# INSTRUCTION BULLETIN

No. 340085  
Machine: 800/810  
Published: 8-97/00  
System: ENGINE

**NOTE: DO NOT DISCARD the Parts List from the Instruction Bulletin. Place the Parts List in the appropriate place in your machine manual for future reference. Retaining the Parts List will make it easier to reorder individual parts and will save you the cost of ordering an entire kit.**

*NOTE: Numbers in parenthesis ( ) are reference numbers for parts listed in Bill of Materials.*

Installation Instructions for Kit number 380606

## SYNOPSIS / PROBLEM:

This kit contains the parts needed to install a heavy duty alternator on the model 800/810 sweeper.

Please follow step-by-step instructions.

## SPECIAL TOOLS / CONSIDERATIONS: None

(Estimated time to complete: 1 hour)

## INSTALLATION:

(Refer to FIG. 1 and 2)

**FOR SAFETY: Before leaving or servicing machine, stop on level surface and set parking brake. Then turn off machine and remove key.**

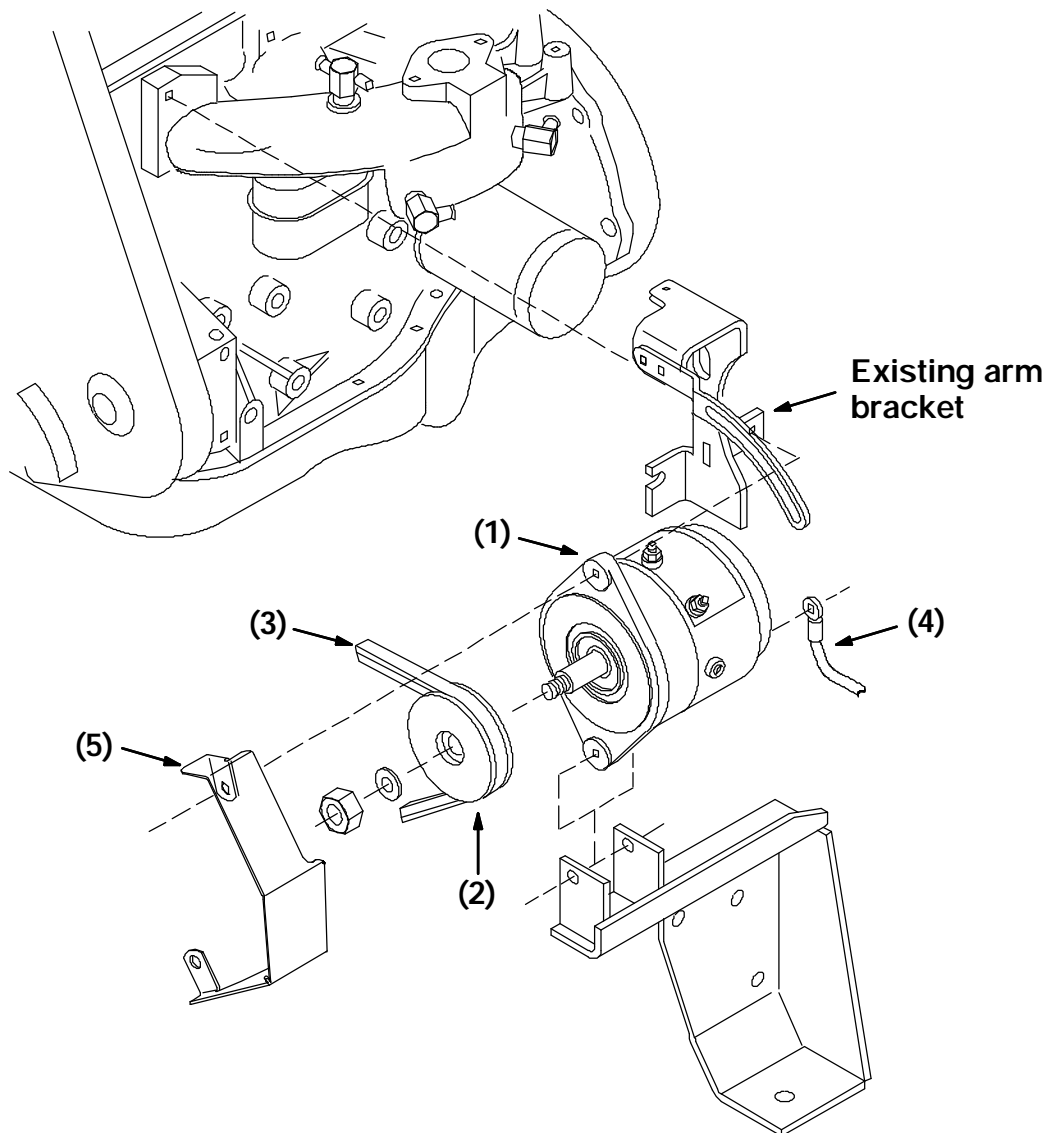
1. Disconnect battery cables from machine.



**WARNING: Always disconnect battery cables from machine before working on electrical components.**

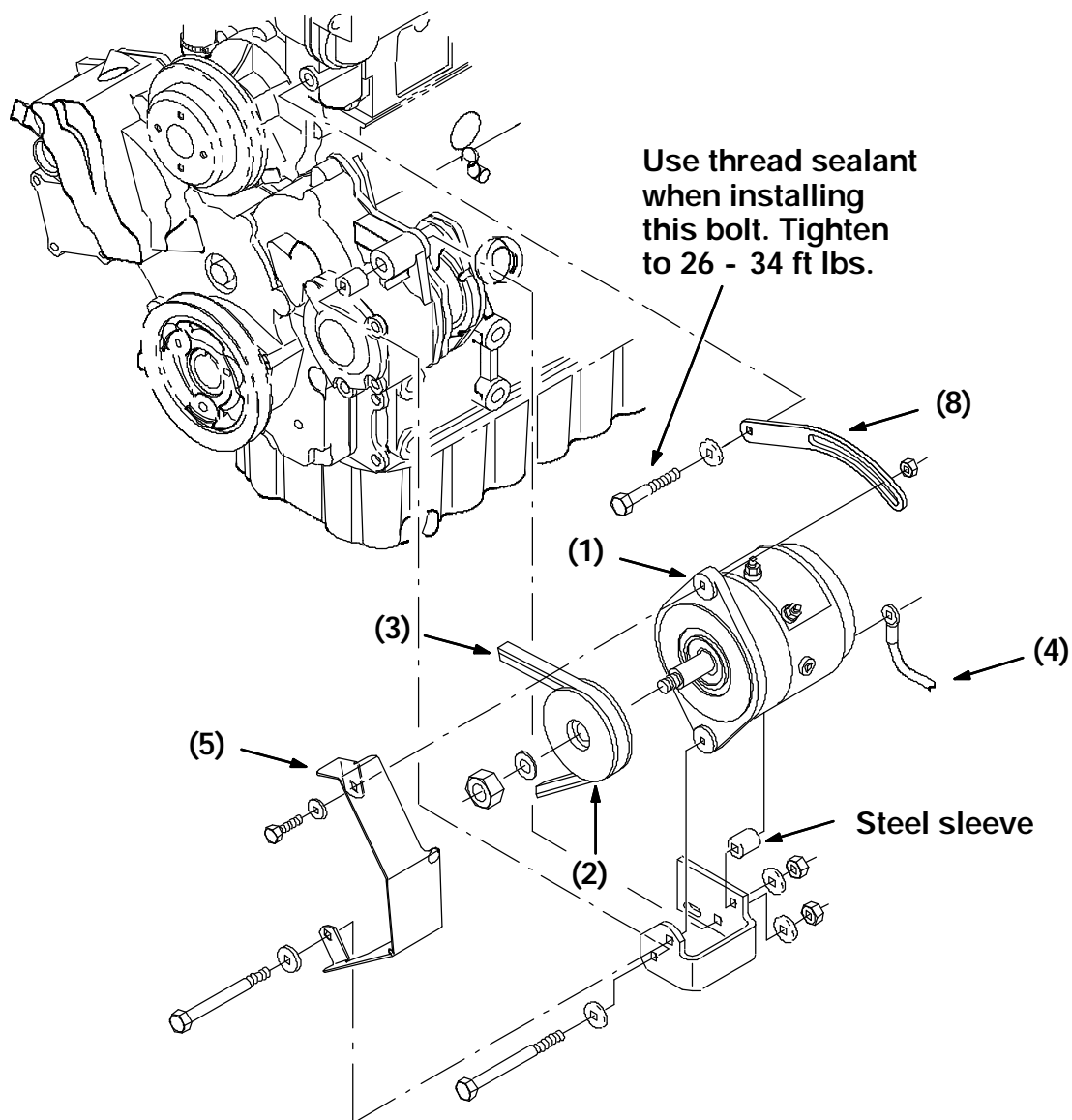
2. Open the engine cover and side door.
3. Locate the existing alternator on the front, left corner of the engine.
4. Mark and disconnect the electrical wires leading to the back of the alternator.
5. Remove the screw and nut holding the top of the alternator to the slotted arm.
6. Loosen the lower mount bolt.
7. Push the alternator in toward the engine block.
8. Remove the V-belt from the alternator sheave, water pump sheave, and crankshaft sheave. Remove and discard the V-belt.
9. Remove the lower mount bolt and nut. Remove the existing alternator from the engine.  
*Retain the steel sleeve (Diesel only). (Refer to FIG. 2)*
10. **DIESEL ONLY:** Remove the existing slotted alternator arm from the diesel engine and install the new arm (8) in the same location. **NOTE: Make sure the engine is completely cooled and the radiator cap is removed before loosening the alternator arm bolt - a small amount of engine coolant may run out of the bolt hole. Use thread sealant on the bolt when installing the new arm (8). Leave the bolt loose for now.** (Refer to FIG. 2)

11. Install the new sheave (2) onto the new alternator (1). (Refer to FIG. 1 and 2)
12. Position the new alternator (1) and new belt guard (5) onto the lower mount bracket on the engine. Reinstall the lower bolt, steel sleeve (Diesel only), and nut. Leave loose for now. (Refer to FIG. 1 and 2)
13. Reinstall the upper bolt and nut through the new arm (8) (Diesel only) and new alternator (1). Leave loose for now. (Refer to FIG. 1 and 2)



**FIG. 1 - Alternator Assembly (Gas/LP machines only)**

14. Install the new V-belt (3) onto the three sheaves. Pull the alternator away from the engine until the V-belt is tight. Tighten both alternator mount bolts and the bolt that attaches the arm (8) (Diesel only) to the engine block. (Refer to FIG. 1 and 2)
15. Install the new ground wire (4) onto the back of the new alternator (1) and down to a ground stud on the engine. (Refer to FIG. 1 and 2)
16. Reconnect the electrical wires to the back of the new alternator (1 and 2).
17. Reconnect the machine battery, reinstall the radiator cap (Diesel only), and start the engine. Check the new alternator for proper operation and for any coolant leaks at the arm mount bolt (Diesel only). (Refer to FIG. 2)



**FIG. 2 - Alternator Assembly (Diesel machines only)**  
**BILL OF MATERIALS FOR HEAVY DUTY ALTERNATOR KIT 380606**

Ref.	TENNANT Part No.	Description	Qty.
1	75828	Alternator, 80amp, brush-less	1
2	77555	Sheave	1
3	83692	V-belt, 46.4L	1
4	31525	Ground wire	1
5	21223	Belt guard	1
6	21237	M4 hex screw	2
7	32978	#8 internal lock washer	2
8	380636	Alternator arm (Diesel only)	1

TENNANT COMPANY  
P. O. Box 1452  
Minneapolis, MN 55440-1452